



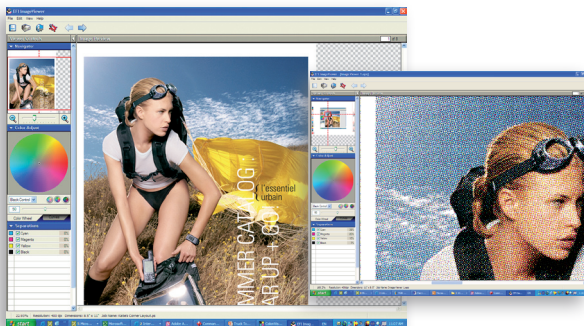
Fiery Graphic Arts Package, Premium Edition

Expert-Level Tools for Graphic Arts Professionals

In the graphic arts environment, achieving great, high-quality colour every time is critical. Whether a job is produced on a digital or offset press or both, the Fiery Graphic Arts Package, Premium Edition provides the most comprehensive tools that enable graphic art professionals to achieve consistently accurate colour and the highest quality print. It also adheres to industry standards and simulates the characteristics of other output devices while achieving optimal workflow.

Powerful Proofing Capabilities

Optimising the proofing process can help better manage increasingly shorter turnaround times. Users save time and money with a visual review of all file elements with Fiery ImageViewer. Local and remote soft proofing and intuitive colour editing capabilities also enable fast preview of rasterised files and correction of potential problems before committing the file to print.



The Fiery Graphic Arts Package, Premium Edition, makes proofing fast, easy, reliable and cost effective, streamlining the approval process and ensuring accurate results.

Optimised Workflow with Accurate Simulations

The Fiery Graphic Arts Package, Premium Edition, contains two sophisticated simulation capabilities that provide operators with more control over the outcome of the printing process.

- The colour or white point of paper used in the printing process can dramatically affect the final colour of a job. With advanced Paper Simulation Editing, graphic arts professionals can adjust the hue, brightness and saturation of the substrate defined in the CMYK simulation profiles to more accurately simulate the final printed output.
- When the final jobs are printed on an offset press, Halftone Simulation guarantees optimal quality and more control over halftone generation, including the ability to customise screen frequency per colour and to define custom screening functions.

For operations that print on newsprint, combining Halftone Simulation and Paper Simulation Editing allows colour management of both the white point and the halftone dot for optimum output quality.

For mixed offset and digital environments, the wide range of Filters for Hot Folders for standard graphic arts file formats seamlessly integrate Fiery into a CTP/CTF environment and shorten job set-up with direct print submission of native files.

Predictable, Consistent Colour

Fiery's Graphic Arts Package Premium Edition, offers a set of expert-level tools to ensure successful printing at the expected level of quality:

- Preflight automatically performs a series of checks, eliminating the need to purchase third-party preflight applications. Benefits include increased productivity and elimination of costly errors at the printing stage.
- Postflight is a diagnostic tool that analyses processed files, letting operators troubleshoot unexpected print results. Specific feedback reduces the amount of time an operator must spend printing and reprinting jobs to test various colour settings.
- For further analysis, use Progressives to allow visual inspection of the colour separations used by the Fiery.
- The easily customised Control Bar adds dynamic job information to a printed document, including a logo or company name on each printed page and custom colour bars.
- Configurable Auto-Trapping gives operators full control over trapping values without impacting performance.



Fiery Graphic Arts Package, Premium Edition

EFI's portfolio of integrated solutions increases productivity and improves your bottom line. Find out more at www.efi.com.

ImageViewer: Includes colour wheel editing per page. View traps, dot shapes, screen angles and moiré patterns, colour profile changes. Exports raster file to PDF for offline proofing. Includes easy navigation, multi-page preview. Zooms up to 3200 percent and down to dot cell level.

Paper Simulation Editing: Registers and adjusts the colour and/or white point of paper defined in CMYK simulation profiles.

Halftone Simulation with Frequency Per Colour: Offers three user-defined halftone screens, LPI and screen angles per colour channel, and custom or application-defined dot shapes.

2-Colour Print Mapping: Provides unique proofing capability for two colour presses that is useful when spot colours are known at a later stage in the document approval process.

Configurable Auto-Trapping: Offers configurable parameters such as: Width, colour reduction, shape, object type. Is application independent, so it does not adversely affect RIP performance.

Filters for Hot Folders: Automates sending print files to a Fiery through simple drag & drop or print-to-file function. Includes a set expert level filters (CT/LW, TIFF/IT, EPS, PS, PDF, DCS2, 1-bit TIFF, PDF2Go, ExportPS, JPEG, PDF/X-1a and PDF/X-3 preflight).

Preflight: Includes reports on fonts, spot colours, high resolution files, hairlines below threshold, overprints, and PS errors. Validates VDP file search path and resources. Supports formats such as: PS, PDF, EPS, PPML, VPS and VIPP.

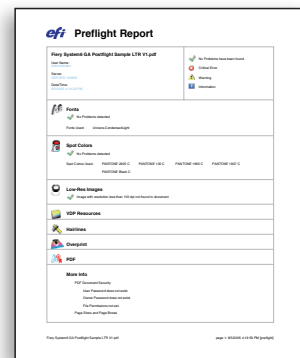
Postflight: Has objects (graphics, text) that are colour-coded. Offers detailed report that identifies colour spaces and PPD options, provides information about the printing environment and advice on possible procedures and values. Can also print a test page to verify the condition of the printing environment.

Progressives: Prints a CMYK job with one separation, then two, then three, then four. Simulates one-and two-colour presses including the sequence. Identifies separations Fiery sends to the printer.

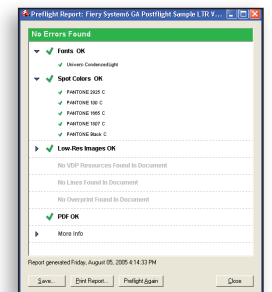
Control Bar: Is highly customisable with fields to display job information and colour control bar. Has the ability incorporate any EPS file.



Add dynamic job information and customise the Control Bar.



Generate a Preflight report to view and communicate potential problems before the job goes to print.



For more information contact your local Fiery server supplier or go to www.efi.com/fiery.

Graphic Arts Solutions

EFI B.V
Boeing Avenue 201-207
1119 PD Schiphol-Rijk
The Netherlands
+31 [0]20 658 8000 tel
+31 [0]20 658 8001 fax
www.efi.com

Auto-Count, Bliss, Changing the Way the World Prints, ColorWise, Command WorkStation, DocBuilder, DocBuilder Pro, DocStream, EDOX, EFI, Fiery, the Fiery logo, Fiery Driven, the Fiery Driven logo, OneFlow, PrinterSite, PrintFlow, PrintMe, PrintSmith Site, Prograph, Proteus, RIP-While-Print, Setting the Standard in Digital Printing, Ultravu and VUTEK are registered trademarks of Electronics For Imaging, Inc. in the U.S. Patent and Trademark Office and/or certain other foreign jurisdictions. Bestcolor is a registered trademark of Electronics For Imaging GmbH in the U.S. Patent and Trademark Office. AutoCal, Balance, BioVu, BioWare, Build, ColorCal, Digital StoreFront, Estimate, Fiery Link, Fiery Prints, Fiery Spark, FreeForm, Hagen, Jetrion, Logic, MicroPress, PhotoXposure, Printcafe, PrintSmith, PSI, PSI Flexo, Remoteproof, RIPchips, Scan, Screenproof, SendMe, Splash, Spot-On, UltraTex, UV Series 50, VisualCal, WebTools, the EFI logo, the Fiery Prints logo and Essential to Print are trademarks of Electronics For Imaging, Inc. Best, the Best Logo, Colorproof, PhotoXposure, Remoteproof, and Screenproof are trademarks of Electronics For Imaging GmbH. All other terms and product names may be trademarks or registered trademarks of their respective owners, and are hereby acknowledged.