



BUSINESS AUTOMATION SOFTWARE FOR PRINT AND PACKAGING

# EFI PrintSmith

Speed  
Precision  
Control



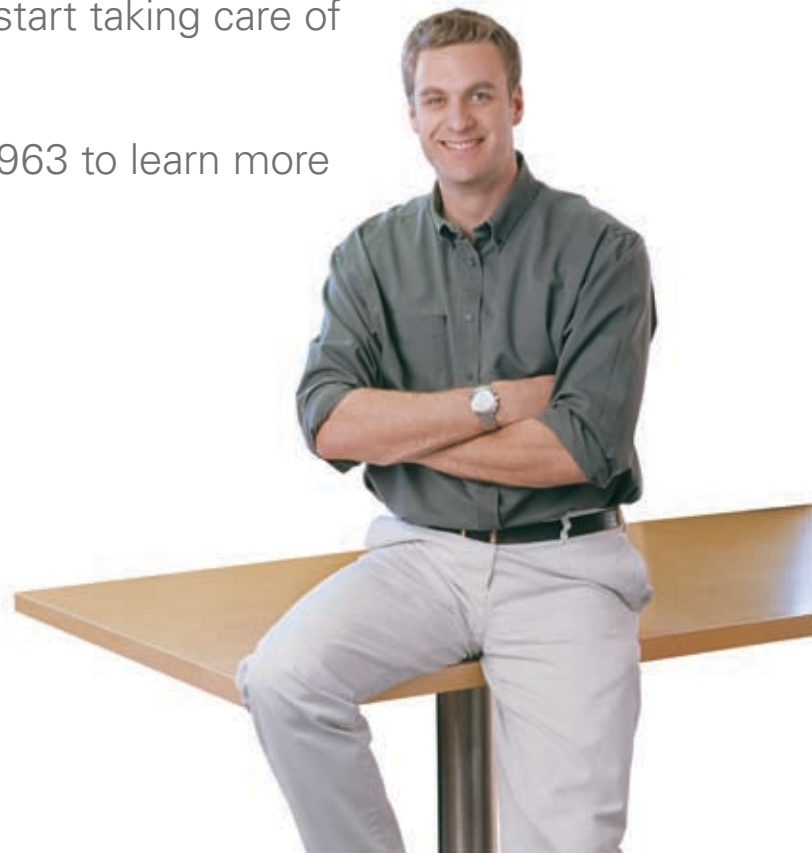
# The Profit is in the Detail

No matter what size your printing business, you can quickly drown in details. Hand-written scraps of paper detailing estimates, job tickets stuffed with notes, and stock orders on post-its can drag you away from managing your business and maximizing your profit.

Take control of it all with EFI™ PrintSmith®, the most powerful, flexible and feature-rich print shop management software available today. PrintSmith can save you time and money by automating all the detail-laden aspects of your business from estimating to production to invoicing and more. Scalable from neighborhood copy shops to large production operations, your investment in PrintSmith is backed by industry-leading development and support.

You can even add EFI PrintSmith Site®, an e-commerce option, to your PrintSmith system and start taking care of your customers online today!

Visit [www.efi.com](http://www.efi.com) or call 1-800-426-4963 to learn more about PrintSmith.





# Take Control with PrintSmith

PrintSmith is a complete print shop management system that offers powerful estimating, point-of-sale, account management, production management, receivables and sales analysis tools.

The quick and easy solution tracks the information that you need to know about any customer account. Invoices can be reviewed or reopened for reprints at any time and automatically updated with new pricing. You can review customer history in chronological or reverse order and sort out payments, journal entries or finance charges. In addition, you can find particular items and bookmark them for future reference and generate customer lists. With the optional report writer, you also can develop and automate targeted direct mail advertisements. You can even generate a reorder report for each customer to let them know when it's time for a reprint – a value-added service that improves your customer service.

PrintSmith generates customer statements with flexible messaging that you can tailor to each customer. Payment history, special terms, notes on overdue accounts, sales representative names and contact information are all quick and easy to include with PrintSmith. The system produces statement summaries for your accounting staff too, enabling them to do their jobs more accurately and efficiently.

PrintSmith has complete aging facilities for accounts receivable and automatically tracks account history for each customer. In addition, posting payments is quick and easy – just pick unpaid invoices from the online list and enter partial or full payments against any item. You can also put payments on accounts and make refunds or set up master accounts to handle several customers, departments, divisions or multiple store locations.

With account aging and customer history, you have the pertinent information for a complete sales analysis, so you can identify which customers, services and products are the most profitable.

Adopted internationally and widely used, PrintSmith helps you make informed decisions so your business grows successfully.



### Feature-Rich:

PrintSmith has a module for everything you need from estimating and quoting to production management with value-added features like profitability tracking and product sales analysis.

### Scalable:

PrintSmith capabilities come in portable, stand-alone and networked configurations.

### User-Friendly:

Know Mac? Know Windows? You already have the knowledge you need to run PrintSmith.

### Flexible:

Customize PrintSmith with options like custom reports, point-of-sale support, multi-user networking and more. Interface with major accounting packages and other third-party software.

### Well Supported:

We train in classrooms all over the world, at your office, and at Connect – EFI's annual users' conference.

### Integrated e-Commerce:

Your Web site is only as powerful as the management system behind it. With PrintSmith, you get the power and ease-of-use all in one integrated system.

### Benefits:

- Provides management with greater overall visibility.
- Enhances customer service.
- Improves billing accuracy and cash flow.
- Supports informed decisions about customers, products and profitability.
- Gives you the time to manage effectively.
- Increases your profit potential.

# There's a PrintSmith Solution for Your Shop

Feature Comparison	PrintSmith	PrintSmith Copy Shop	PrintSmith Lite	PrintSmith Estimator
Quote Letters	●	●	●	●
Open, close and reopen jobs anytime	●	●	●	●
Multiple bidding capabilities (40 qtys)	●	●	●	●
Extensive copier pricing capabilities	●	●	●	●
Paper Calculator	●	●	●	●
Paper vendor electronic catalog import	●	●	●	●
Document & job templates	●	●	●	●
System security	●	●	●	●
Multi-tasking	●	●	●	●
Multi-language	●	●	●	●
Spell Checking	●	●	●	●
On-line documentation	●	●	●	●
Price book generator	●	●	●	●
Global pricing changes	●	●	●	●
Large format & Digital press estimating	●	●	●	●
Job Tickets	●	●	●	○
Contacts	●	●	●	○
Invoicing	●	●	●	○
Copier production management	●	●	●	○
Stock order management/inventory	●	●	●	○
Work-in-progress	●	●	●	○
Customer lists	●	●	●	○
Accounts – prospects and customers	●	●	●	○
Job costing	●	●	●	○
Print Estimating Pricing	●	○	●	●
Press production management	●	○	●	○
Mailing labels	●	●	○	○
Estimate history	●	●	○	○
Point of sale functionality	●	●	○	○
Account aging	●	●	○	○
Accounts receivable / Billing Statement	●	●	○	○
Cash drawer control	●	●	○	○
Account History	●	●	○	○
Sales tax accounting	●	●	○	○
Sales / Marketing analysis	●	●	○	○
Accounting links	●	●	○	○
Tracker	▲	▲	▲	○
Extended Price Book Generator	▲	▲	▲	▲
Multi-User / Multi-Platform	▲	▲	▲	▲
Report Writer	▲	▲	▲	▲
Bar code job tracking	▲	▲	▲	○
PrintSmith Site	▲	▲	○	○
Integrated Credit Card Processing	▲	▲	○	○
6 months toll free phone support	●	●	●	●
6 moths free update	●	●	●	●

PrintSmith's modular, scalable product line lets you choose a solution that fits your business size and budget – then grows with you. We offer software for fast turnaround digital operations, small and large print shops and everything in between.

EFI PrintSmith, our flagship solution, caters to growing operations with any combination of digital, offset and specialty printing. This PrintSmith version features press production management tools, including labor rates and speed tables, for offset operations. See the chart at left for other PrintSmith options designed to fit your business model and needs.

- Included
- Not Available
- ▲ Optional



# Save Money and Time with Key PrintSmith Features

In your business, you need to make every moment, staff member and machine count. You also need to reduce production costs and improve efficiencies wherever possible. PrintSmith can help you achieve these goals through a complete set of money-saving, time-saving features that cover every aspect of managing your business.

## PrintSmith to Fiery Connectivity

EFI PrintSmith is designed to provide your business with a new level of management capabilities. The integration within the system and with other EFI products lets your people work together more efficiently and cost effectively by allowing you to extend the functionality and value of your Print MIS. With PrintSmith, you can link to Internet-based communication tools like PrintSmith Site and Computer Integrated Manufacturing (CIM) tools like the EFI PrintSmith to Fiery® Connector.

The EFI PrintSmith to Fiery Connector provides two-way communication between your Fiery server and controller and your PrintSmith management system. This seamless integration passes job instructions from the management system to the Fiery, and production information from the Fiery to the management system. This connection eliminates redundant, manual handling of information, while offering your people real-time access to the information that they need to perform their jobs. These real-time details speed up production and provide a high degree of accuracy in costing and pricing processes.

Look for the Fiery name when purchasing your digital devices. Only the Fiery servers and controllers provide this level of integration potential.

Estimator Checklist: Job 1 (1803)

Customer:	DAVE DAVE	Ordered On:	1/11/2006
Contact:	Tom Smith	Taken By:	LJA
Job Description:	Brochure	Sales Rep:	DAVE
Document Number:	1803	Wanted By:	1/11/2006
Press Definition:	Koncon 4 Tower	Colors Front:	1
Machine Name:	1/1A	Colors Back:	1
Setup Time:	0:40	Washup Time:	0:24
Stack:	05# Production white	Finished Size:	11.5 x 11
Stock Number:	0419-2030A	Folded Size:	1/1A
Vendor:	3yards	Sheet:	1
Parent Size:	17.5 x 22.5	Signature:	1
Run Size:	17.5 x 22.5	Run Size:	1/1
Job Comment:			

Item	Quantity	Est. Time	Est. Cost	Markup (%)	Markup Amt.	Sell Price	
Quantity	5000						
Total Press Time		1:56	292.46	50%	146.22	438.67	
Running Speed (lph)	6,000						
Parent Sheets Required	3,532		405.14	50%	217.57	622.71	
Press Sheets	3,532						
Estimated Waste	933						
Brochery Waste							
Production	91				70.00	70.00	
Colors Front							
C, M, Y & K							
Colors Back							
C, M, Y & K							
Pre Press							
Standard brochure design	1		50.00	0%	0.00	50.00	
Color proof 11 x 17	1		7.50	50%	3.75	11.25	
Process (cmk) ink	0.2938		0.00	100%	11.81	11.81	
Koncon 4 Plates	4		80.00	50%	40.00	120.00	
Parent to run out text	8	0:00	5.96	72%	15.84	21.80	
Bindery							
Double parallel fold	5,000	0:40	50.00	50%	25.00	75.00	
17" boxes (5000 per box)	1		0.96	0%	0.00	0.96	
<b>Total</b>			<b>2036</b>	<b>922.01</b>	<b>37%</b>	<b>598.74</b>	<b>1,520.75</b>

**View Price List**

**4/C Brochure**

**80# Productolith White**

Finish Size: 8.5 x 11  
Press: Komori 4 Tower

Quantity	Price	Price per each
100	559.56	5.5956
250	571.81	2.2873
500	596.32	1.1926
1,000	640.85	0.6409
1,500	685.94	0.4573
2,500	778.81	0.3115
3,500	869.98	0.2486
5,000	1,005.64	0.2011
7,500	1,237.54	0.1650
10,000	1,466.14	0.1466
12,500	1,691.63	0.1353
15,000	1,909.03	0.1273
17,500	2,129.85	0.1217
20,000	2,342.78	0.1171
25,000	2,769.08	0.1108
30,000	3,203.43	0.1068
40,000	4,077.13	0.1019
50,000	4,943.90	0.0989
75,000	7,068.95	0.0943

8/6/2006

Generated from job using the "Printing" pricing method

Special Options:  
Price includes customer discount of 10.0%

Pre Press Charges:  
Standard brochure design  
Color proof 11 x 17  
Process (cmyk) inks  
Komori 4 Plates  
Parent to run cut text

Production: N/A

Bindery:  
Double parallel fold  
Run to finish cut text  
11" boxes (5000 per box)

## Pricing

PrintSmith offers the most flexible cost-plus pricing system on the market. The powerful solution supports all your production equipment such as digital presses, offset presses, wide format devices, high-speed color, and black and white digital devices. For sophisticated printing requirements, it also handles all types of booklets, signatures and business forms.

In addition, PrintSmith comes fully equipped with a selection of prepress and bindery options as a starting point, with the ability to customize and add operations as needed, so you can make money on every service and product that you offer.

## Import Stock Catalog

PrintSmith's Import Stock Catalog feature gives you the power to import stock definitions and update stock prices directly from a paper vendor's electronic catalog\*. Now, you can be sure that your quotes are timely and accurate with the right paper and the most current pricing available.

\*Note: Check with your paper vendors for electronic catalog availability.

## Paper Calculator

PrintSmith's Paper Calculator works with the estimating module to create more accurate quotes quickly and easily. It automatically adjusts the cutting costs for bleeds, gripper edges, gutters, color bars and more ensuring optimal paper selection and run sizes are used. The paper calculator can also add a "cut out" diagram to the job ticket to offer the cutting operator a visual reference of the layout and final size.

**Paper Calculator**

Parent Size: 19 x 25  
Run Size: 8.5 x 11  
Finish Size: 8.5 x 11

Gripper Edges:  Top  Bottom

Folio Edges:  Left  Right

Gutter:  Top  Bottom

Need:  Top  Bottom

White spacer:  Top  Bottom

Trim:  4 sides  Work and Tumble

Use color bar:

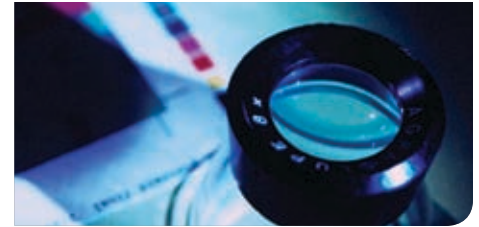
Match Grain Direction:  Neither  Swing / Combination

Parent, Finish: 8.5 x 11 out of 12.5 x 19  
Cuts to run: 5  
Cuts to finish: 2

12.5  
11  
8.5  
19

Parent, Finish Parent, Don

OK Cancel Attach to job ticket Print...



## Estimates, Invoices and Quote Letters


PrintSmith provides estimates for all of your jobs from business cards and letterheads to complex projects. Advanced features include automatic multi-bidding for up to 40 different quantities, invoice templates for repeat jobs and more.

## Estimate History

PrintSmith tracks every estimate ever created and provides you with a win/loss ratio by customer, so you know which clients offer the greatest profit potential.

## Stock Order Report

Manage your stock inventory using PrintSmith's Stock Order report. Daily reports provide a complete list of all the paper you will need (including size, quantity and cost) to complete every job. The report also includes a recap of stock below its minimum level, triggering automatic restocking. You can sort the report by paper vendor and then order the paper from all of your vendors at one time.



7250 N. Hartford Dr.  
Scottsdale, AZ 85266  
Phone: 480-558-5800  
Fax: 480-530-5904

**Estimate**  
No. **E#1801**  
Date 9/5/2006  
Customer P.O. No.

Tom Boshell  
DAYS INN  
2888 N FEDERAL HIGHWAY  
MESA, AZ 85183  
Phone: 602-555-1264  
Fax: 602-555-5128

Robert Hilton  
DAYS INN  
2888 N FEDERAL HIGHWAY  
MESA, AZ 85183  
Phone: 602-555-1264  
Fax: 602-555-5128

QUANTITY	DESCRIPTION	AMOUNT
5,000	4/C Brochure, 6.5 x 11 White 80# Productouch, folded to 3.66 x 8.5 Standard brochure design Color proof 11 x 17 5,000 Double parallel fold Qty: 7500 = 1,375.04 Qty: 10000 = 1,833.06 Qty: 15000 = 2,121.16	1,117.00
	Environmental Fee	2.79
<p>Taken by: Dave This estimate is good for 30 days. Please call us if you have any questions. Thank you!</p>		<p><b>SUBTOTAL</b> 1,120.17 <b>TAX</b> 98.00 <b>SHIPPING</b> 24.06 <b>TOTAL</b> 1,331.72</p>

Stock Order											
Date	Invoice#	Job	Customer Name	Vendor	Stock Description	Stock Number	Parent Size	Quantity	Cost	Received	Filled
6/21/06	1810	1	Alesi Glass Industries Inc.		20# Ardor Bond Wove White		11 x 17	773	10.71	0	
6/21/06	1824	4	Alesi Glass Industries Inc.		20# Ardor Bond Wove White		11 x 17	2,400	33.24	0	
6/21/06	1824	5	Alesi Glass Industries Inc.		20# Ardor Bond Wove White		11 x 17	2,500	34.63	0	
9/2/05	1783	1	Britgar Motors, Inc.	Ingram	24# Vanguard #10 White		9.5 x 4.125	2,615	30.99	0	
6/12/05	1793	2	Alesi Glass Industries Inc.	Ingram	24# Vanguard #10 White		9.5 x 4.125	286	3.39	0	
9/2/05	1795	2	Britgar Motors, Inc.	Ingram	24# Vanguard #10 White		9.5 x 4.125	286	3.39	0	
8/7/05				Unisource	20# Ardor Bond White		8.5 x 11	100,000	691.56	0	
8/7/05	1793	1	Alesi Glass Industries ...	Unisource	20# Ardor Bond White		8.5 x 11	3,000	20.75	0	
4/19/05	1801	1	Alesi Glass Industries ...	Unisource	20# Ardor Bond White		8.5 x 11	200,000	1,383.12	81,105	X
4/19/05	1802	1	BP Oil	Unisource	20# Ardor Bond White		8.5 x 11	200,000	1,383.12	50,000	
4/19/05	1803	1	BP Oil	Unisource	20# Ardor Bond White		8.5 x 11	10,250	70.88	10,250	X
8/7/05	1805	1	Alesi Glass Industries ...	Unisource	20# Ardor Bond White		8.5 x 11	101,375	701.07	0	
8/7/05	1809	1	Alesi Glass Industries ...	Unisource	20# Ardor Bond White		8.5 x 11	1,066	7.37	1,066	X
9/2/05	1814	1	Alesi Glass Industries ...	Unisource	20# Ardor Bond White		8.5 x 11	1,066	7.37	0	
8/7/05	1808	1	Alesi Glass Industries ...	Unisource	80# Centura White		23 x 35	1,326	194.98	0	



## Job Ticket

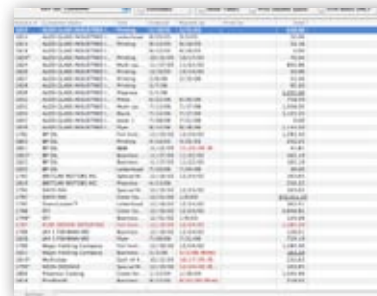
PrintSmith's job tickets clearly present all the information needed to manage a project, along with specific instructions on each job. In addition to production details, these instructions include important delivery information regarding split shipments, drop shipments, blind shipments, and back orders. The Job Ticket's barcode works with PrintSmith's optional job tracking system to update job status quickly and efficiently. A simple swipe of the bar code reader documents the location of any job as it moves through production.

Optional job tickets are provided with the Report Writer option. You can also use Report Writer to develop or customize your own ticket.



## Work-in-Progress Reports

The Work-in-Progress Reports keep you informed of all the estimates and invoices going through your shop. You can sort documents by press, ink color, due date, proof date, customer account, invoice number, sales representative, and job location.

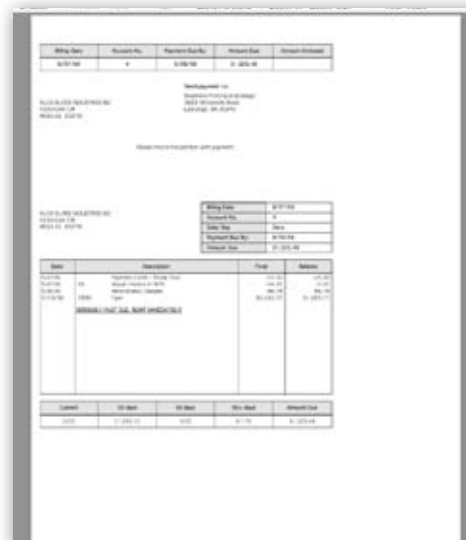


## Account Statements

PrintSmith's accounts receivable system generates monthly statements that include invoice number, product, total amount, balance due and more. Printing options include user-defined payment dates and billing addresses, new payments made, late payment reminders, customer specific statement notes and more.

PrintSmith generates statements on all of your accounts, a specific range of accounts, or certain selected accounts. You can even preview statements on-screen prior to printing. Collection reports can be generated and include the option of adding key information such as sales representative, contact name, payment dates, phone number and more.

For extra convenience, we provide a complete set of business form images that work perfectly for printing documents right out of the box.



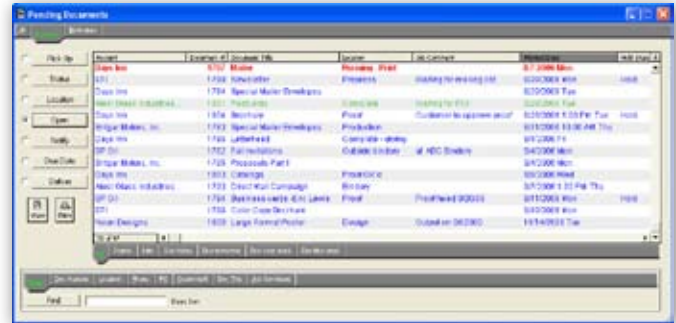
# Information is at Your Fingertips with PrintSmith Features

## Update Prices Feature

With the touch of a button, you can increase or decrease all of your prices across the board. It's that simple.

## Pending Documents Feature

Consider Pending Documents as "control central" for checking the status of estimates, invoices and all the other items pending in your business. Pending Documents tells you what's due and when it's due, while powerful sorting and searching capabilities help keep you organized.



## Reorder Report

Be proactive in contacting your clients! PrintSmith's reorder report notifies you of the jobs your customers may need you to run again. And when you call your customers, all the information is at your fingertips, making the reordering process even easier.

Account	Customer	Order Date	Invoice #	Description	Amount
4	ALEX GLASS INDUSTRIES INC Lawrence Alexi 602-555-9315	8/28/05	1813	Printing	18,074.64
		11/1/06	1827	Printing	59.72
		11/13/06	1839	Flyer	3,144.50
					19,278.86
5	BF DG Jim Smith 602-555-2955	1/11/06	1821	B&W	45.15
		11/17/05	1823	Business Cards	178.40
					223.55
7	DAYS INN Tom Bodelle 602-555-1264	4/2/02	1501	Sales Brochure	482.01
					482.01
18	Major Holding Company Mike Palisca 310-555-1212	7/3/06	1831	Business cards -Victor Dewey	174.83
					174.83
					28,159.25





## Daily Closeout

At the end of each day, PrintSmith provides a daily report for balancing statistics by category. Closeouts are available on a daily, monthly and yearly basis or for any other designated time frame. PrintSmith also links with many leading accounting packages to give you complete financial reporting quickly and easily, maximizing your investment.

## Account Aging

PrintSmith makes tracking and collection easier with a detailed aging report for every account, including contact information. PrintSmith's account statistics reports give you the data you need to manage each account.

## Post Payments

PrintSmith makes handling payments an easy process with a complete display of all open/unpaid items for each account. You can post partial and full payments, spread payments over invoices and process refunds. And with PrintSmith's Master Billing feature, you can post to several accounts being paid through one master billing account.

The screenshot displays a software window titled "Daily Sales 7/28/06". It is divided into several sections:

- Sales Breakdown -**: A table listing various sales categories such as Print, Bindery, Prepress, etc., with columns for Total and % Sales.
- TAX -**: A summary of tax-related figures including Taxable Sales, Tax on Sales, and Non-Tax Sales.
- Receipts Summary -**: A table detailing receipts from Cash, Checks, Credit Card, and Deposits Applied.
- Miscellaneous -**: A section for other financial items like Actual Deposit, Cash Over/Short, and Refund Checks.
- Production Data -**: A table showing production metrics such as Sales/Sheet, Sales/Man-Hour, and Sales/Press-Hour.

Overlaid on the right side of the window is a "Closeout Reports" dialog box. It contains a list of report types with checkboxes, including Register Type, Deposit Ticket, Sales Summary, New Invoices, New Estimates, Invoice Pickups, Payments, Journal Entries, Tax Summary, and Accounting Links. At the bottom of the dialog are "Finish Closeout" and "Cancel Closeout" buttons.

8/27/06 **Detailed Account Aging** as of 8/27/06 Page 1

Acct #	Customer Name	Status	Telephone	Contact	Sales Rep	Last Payment
Type	Doc Num	Doc Date	30 to 59	60 to 89	90+ days	Balance
4	Alexi Glass Industries, Inc.	Delinquent	602-555-9315		Dave	5/2/06
	PMT	5/2/06				-25.00
	MEMO 25	5/2/06				-0.02
	MEMO	5/3/06			86.78	86.78
	INV 1836	7/19/06	31,263.72			31,263.72
	Unapplied Credits		-25.02			
	<b>Total</b>		<b>31,263.72</b>	<b>0.00</b>	<b>86.78</b>	<b>31,325.48</b>
6	Britoar Motors, Inc.	Delinquent	602-555-5248	Les Britton	John	5/3/06
	INV 1750	12/19/02			1,439.64	1,439.64
	INV 1795	1/18/06			278.73	278.73
	PMT	1/18/06				-666.00
	Unapplied Credits		-666.00			
	<b>Total</b>		<b>0.00</b>	<b>0.00</b>	<b>1,718.37</b>	<b>1,052.37</b>
7	Davis Inn	Current	602-555-1264	Robert Hilt	DAVE	2/3/06
	INV 1796	2/3/06			320.56	320.56
	MEMO 21	2/3/06				-5,000.00
	Unapplied Credits		-5,000.00			
	<b>Total</b>		<b>0.00</b>	<b>0.00</b>	<b>320.56</b>	<b>-4,679.44</b>
19	IMaster1 EF1	Delinquent	847-299-6000	tidi Arieli	Ron	12/31/02
	INV 1699	8/30/02			326.92	326.92
	INV 1717	11/29/02			253.46	253.46
	INV 1732	12/19/02			14,264.17	14,264.17
	MEMO	8/26/05			64.15	64.15
	MEMO 17	10/12/05				-25.35
	[Sub-Account] Velocity Movers					
	INV 1691	8/1/02			1,209.60	1,209.60
	INV 1709	8/30/02			4,252.89	4,252.89
	INV 1723	9/30/02			253.46	253.46
	INV 1733	11/7/02			537.96	537.96
	INV 1760	12/19/02			278.73	278.73
	Unapplied Credits		-25.35			
	<b>Total</b>		<b>0.00</b>	<b>0.00</b>	<b>21,441.34</b>	<b>21,415.99</b>

## Customer Account Information

PrintSmith gives you great flexibility with account information, allowing you to tailor each account to the unique needs of each customer. You can record comments on invoices and other forms, log comments into each account and choose from a variety of predefined forms for each account. PrintSmith's account statistics reports give you the data you need to manage your accounts effectively.

## Customer Lists

PrintSmith's customer lists tell you who your best customers are by sales-per-month or year, how fast or slow they pay, and/or by their credit limit.

## Outgoing Mail

PrintSmith's comprehensive outbound marketing capability lets you use your customer list to produce targeted letters, labels and complete personalized direct mail pieces. PrintSmith includes the capability to sort and filter your customer list by a variety of criteria and create either personal letters or export the information to other third party software. PrintSmith's optional Report Writer software adds even more database power thru variable data marketing.

## Security

PrintSmith lets you customize the security settings for each user on your system, while sophisticated security measures keep your business information secure.

Customer: #4 Alesi Glass Industries Inc.

Acc't #: 4    Name: Alesi Glass Industries Inc.  
 External Ref #: 10-862-98  
 External Accounting ID: 10259

**Invoice Address:**  
 ALESI GLASS INDUSTRIES INC  
 4800 OAK CIR  
 MESA AZ 85219

**Statement Address:**  
 ALESI GLASS INDUSTRIES INC  
 4800 OAK CIR  
 MESA AZ 85219

**Invoice Contact:**  
 Laurence Alesi  
 Phone: 602-555-9335  
 Fax: 602-555-9472

**Statement Contact:**  
 Laurence Alesi  
 Phone: 602-555-9335  
 Fax: 602-555-9472

Contact List: Alesi, Laurence  
 DeVito, Danny  
 Edit...

Customer: #4 Alesi Glass Industries Inc.

Select Master Account... [18] Major Holding Company

Sales Rep: Dave  
 Business Type: A12  
 Ship Via: FEDEX

PO required on Invoice  
 Do NOT generate statements  
 Account is commisioned  
 Always file original

Default Invoice: Invoice - Short Form  
 Default Estimate: Quote Letter

**Print up to 10 charges:**  
 [1] Charges...    Add to Invoices and Estimates  
 Add Charges...    Add to Job

**Tax Setup**  
 Tax Table: Default  
 Tax Code:  
 Retailer:  
 Tax Exempt  
 Cert. Exempt:

Security level of this account: 00

Customer: #4 Alesi Glass Industries Inc.

Credit Limit: 10,000.00  
 Due days from posting: 0    Avg. Days to Pay: 27  
 Monthly Finance Charge Pct: 0%    (Using standard rate of 1.75%)  
 Finance Charges YTD: 4.00     Never calculate finance charges  
 Automatic Discount Percent: 5.0%  
 Current Balance: 2,618.92

**Account Status:**  
 New     Current     Inactive  
 Past Due     Delinquent     Frozen

**Type:**  
 Full Deposit  
 Cash Only  
 Cash/Check/Credit Card  
 Charge Account

# EFI PrintSmith

## Powerful Options

PrintSmith offers optional software utilities and add-on modules, so you can tailor your system to grow with your business.

### PrintSmith Multi-User

As your business grows, your employees will benefit from direct involvement with PrintSmith, whether they need to generate quote letters, view a job ticket, or print customer statements. PrintSmith Multi-User allows networked PCs and Macs to access the PrintSmith master station via TCP/IP. Remote locations can even connect over the Internet for remote tracking and estimating.

The basic Multi-User module provides access for up to four users. The Multi-User Workstation Pack lets you add workstations in groups of three, for up to as many as 200 individual workstations on your network. You can also expand one workstation at a time using the individual Multi-User Workstation option.

### PrintSmith Site

PrintSmith Site takes it to the next level with an e-commerce solution that's fully integrated with PrintSmith. See datasheet for more detail.

### PrintSmith Tracker

PrintSmith Tracker provides real-time shop floor data collection and job costing for your PrintSmith system. See datasheet for more detail.

### Report Writer

PrintSmith's report writer option gives you a direct and easy way to create and use custom reports tailored to your specific needs. See datasheet for more detail.

### Portable PrintSmith

Portable PrintSmith lets your sales force take PrintSmith Estimator on the road. Portable PrintSmith operates as a stand-alone estimating system or as a live workstation on a PrintSmith network. When on your network, the Portable PrintSmith stations can be synchronized with the master system, allowing you to upload estimates, invoices and

new customer information with the click of a button. It's a powerful time-saver for sales representatives and a cost-effective way to expand your PrintSmith network.

### Integrated Credit Card Approval

With integration to each workstation, anyone can swipe a credit card or enter a credit card payment for immediate approval. See datasheet for more detail.

### Bar Code Job Tracking

Add barcode tracking capabilities to your PrintSmith job solution. See datasheet for more detail.

### Cash Drawer and Receipt Printer

Add professional point-of-sale support with a plug-and-play cash drawer and receipt printer. See datasheet for more detail.

### Extended Price Book Generator

The optional Extended Price Book Generator provides total control over your prices, letting you create a professional price book directly from your PrintSmith software. See datasheet for more detail.

### Why PrintSmith?

Since its introduction to the Graphic Arts industry in 1987, PrintSmith has continued to change the face of automated print shop management. Today, it remains the industry-standard print shop management software due to its data integrity and superior quality. It is also one of the most flexible and easy-to-use business management programs available.

### Money Back Guarantee:

We are so confident that you'll be satisfied with PrintSmith and our support that we will refund the entire purchase price of the software if you are not completely satisfied.

Our challenge to every printer is this: Try PrintSmith business management software. If within 30 days of purchasing the software, you are not fully convinced that PrintSmith's time and money saving features can benefit you and your business, simply return the software and all of the accompanying material for a refund of your investment, less shipping and handling.

For more information  
on EFI PrintSmith  
call 1-800-426-4973  
or visit  
[www.efi.com/PrintSmith](http://www.efi.com/PrintSmith)



EFI's portfolio of  
integrated solutions  
increases productivity  
and improves your  
bottom line. Find out  
more at [www.efi.com](http://www.efi.com).



303 Velocity Way  
Foster City, CA 94404  
650-357-3500  
[www.efi.com](http://www.efi.com)

Auto-Count, BioVu, BioWare, ColorWise, Command WorkStation, Digital StoreFront, DocBuilder, DocBuilder Pro, DocStream, EDOX, the EFI logo, Electronics For Imaging, Fabrivu, Fiery, the Fiery logo, Inkware, Jetriion, MicroPress, OneFlow, PressVu, Printellect, PrinterSite, PrintFlow, PrintMe, PrintSmith Site, Prograph, RIP-While-Print, UltraVu and VUTEK are registered trademarks of Electronics for Imaging, Inc. in the U.S. and/or certain other countries. BESTColor is a registered trademark of Electronics for Imaging GmbH in the U.S. The APPS logo, AutoCal, Balance, ColorPASS, Dynamic Wedge, EFI, Estimate, Fast-4, Fiery Driven, the Fiery Driven logo, Fiery Link, Fiery Prints, the Fiery Prints logo, Fiery Spark, FreeForm, Hagen, the Jetriion logo, Logic, Pace, Printcafe, the PrintMe logo, PrintSmith, Print to Win, PSI, PSI Flexo, Rastek, the Rastek logo, RIPChips, SendMe, Splash, Spot-On, UltraPress, UltraTex, UV Series 50, VisualCal, the VUTEK logo and WebTools are trademarks of Electronics for Imaging, Inc. in the U.S. and/or certain other countries. Best, the Best logo, Colorproof, PhotoXposure, Remoteproof, and Screenproof are trademarks of Electronics for Imaging GmbH in the U.S. and/or certain other countries. All other terms and product names may be trademarks or registered trademarks of their respective owners, and are hereby acknowledged