



# EFI Monarch & Pace

## EFI Monarch and Pace Heidelberg Prinect Interface

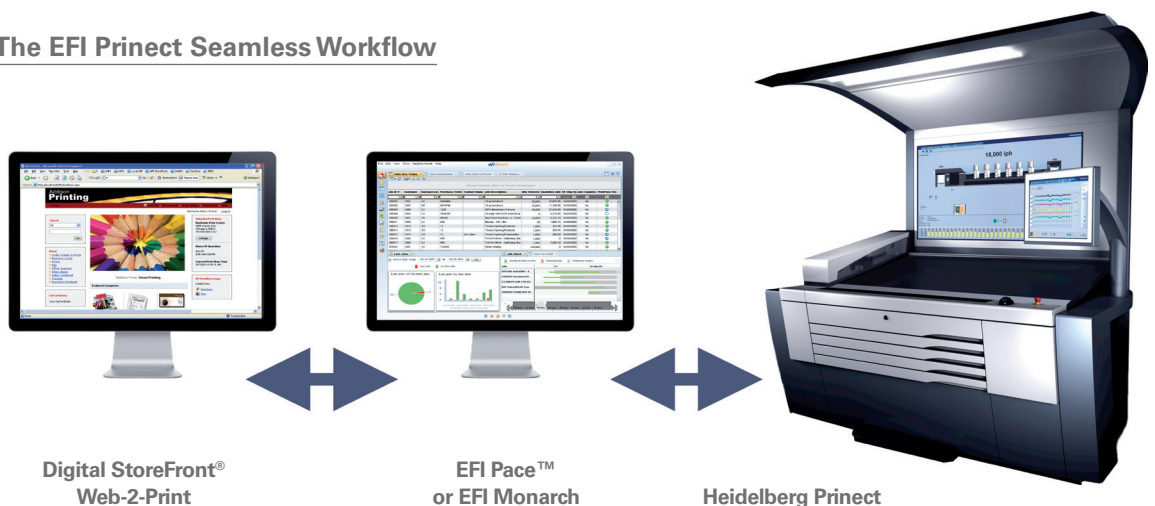
Businesses utilising the Prinect Pressroom Manager to control production and manage production data now have the ability to seamlessly connect with their EFI™ Monarch or EFI Pace Print production and management solutions.

JDF input from an EFI system can automatically create a Prinect production job, assign a workflow plan to that job, and fill the job with rich administration and production data. This information seamlessly supports integrated prepress, press and postpress production operations performed within the Prinect system. As production progresses, JMF provides production status and performance information – in real time – to your EFI Monarch or Pace™ solution.

Prinect Pressroom Manager is the central production management system for the pressroom, making it possible to react rapidly, directly and flexibly to changing requirements. Prinect Pressroom Manager communicates information intelligently so that print jobs are automatically available at the right press at the right time, substantially increasing productivity. Thanks to the efficient use of preset data, make ready times and waste at the press are significantly reduced.

EFI Monarch and Pace provide the business and production framework for your operation. Both solutions are JDF Certified, improving the flow of information and eliminating costly barriers between the management and production processes. The collaboration between EFI and Heidelberg delivers enhanced workflow efficiency and a decisive competitive advantage.

### The EFI Prinect Seamless Workflow



The EFI Prinect workflow provides seamless two-way JDF-based integration between management and production processes, enhancing EFI's end-to-end workflow beginning on your customer's desktop and continuing throughout the planning, production, invoicing and analysis processes – removing touch points, enhancing communication, improving capacity utilisation, and boosting your profit potential.

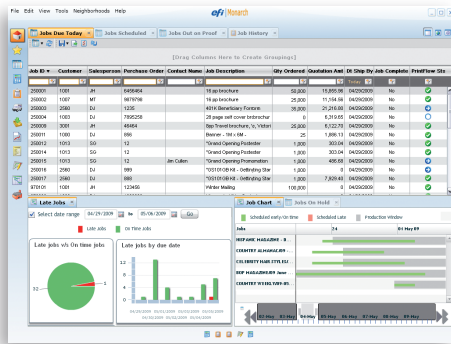


# EFI Monarch & Pace

EFI's portfolio of integrated solutions increases productivity and improves your bottom line. Find out more at [www.efi.com](http://www.efi.com).

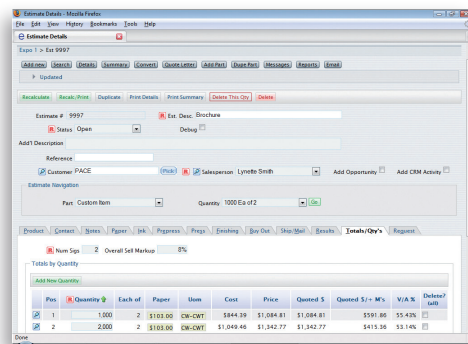
## EFI Monarch

EFI Monarch is an advanced JDF Certified print management solution designed for larger single and multi-plant printing operations. EFI Monarch includes foundation software for estimating, planning, job tracking, inventory, invoicing, receivables, payables, general ledger and financials. Advanced options include Digital StoreFront Web-to-Print, Monarch Planner – smart software for visual planning, PrintFlow Dynamic Scheduling, and Auto-Count Direct Machine Interface.



## EFI Pace

EFI Pace is an advanced JDF Certified print management solution designed for small to medium size printers. EFI Pace is a browser-based solution and includes software for estimating, planning, job tracking, inventory, invoicing, receivables, payables, general ledger and financials. Advanced options include Digital StoreFront Web-to-Print, PrintFlow Dynamic Scheduling, and Auto-Count Direct Machine Interface.



## Prinect Interface Benefits

Automated job submission from EFI Pace to the Prinect production systems offers long-term benefits for your business:

- Eliminates manual order entry and manual production document creation/updates.
- Provides real-time sharing of critical production data without manual hand-offs or re-keying.
- Updates production status supporting your CSR, sales, and management teams.
- Tracks and reports accurate inventory status and material consumption.
- Improves production capacity utilisation by providing real-time data to automated planning and scheduling processes.
- Provides strong base of information to support high-level decision making process.
- Optimises overall productivity and efficiency in management and production environments by eliminating touch points and isolated islands of information.

Advanced Professional Print Software

EFI B.V  
Boeing Avenue 201-207  
1119 PD Schiphol-Rijk  
The Netherlands  
+31 [0]20 658 8000 tel  
+31 [0]20 658 8001 fax  
[www.efi.com](http://www.efi.com)

Auto-Count, BioVu, BioWare, ColorWise, Command WorkStation, Digital StoreFront, DocBuilder, DocBuilder Pro, DocStream, EBEAM, EDOX, the EFI logo, Electronics For Imaging, FabriVu, Fiery, the Fiery logo, Inkware, JetTron, MicroPress, OneFlow, PressVu, Printellect, PrinterSite, PrintFlow, PrintMe, PrintSmith Site, Prograph, RIP-While-Print, UltraVu and VUTEK are registered trademarks of Electronics for Imaging, Inc. in the U.S. and/or certain other countries. BESTColor is a registered trademark of Electronics for Imaging GmbH in the U.S. The APPS logo, AutoCal, Balance, ColorPASS, Dynamic Wedge, EFI, Estimate, Fast-4, Fiery Driven, the Fiery Driven logo, Fiery Link, Fiery Prints, Fiery Spark, the Fiery Prints logo, FreeForm, Hagen, the JetTron logo, Logic, Pace, Printcafe, PrintSmith, Print to Win, PSI, PSI Flexo, Rastek, the Rastek logo, RIPChips, SendMe, Splash, Spot-On, UltraPress, UltraTex, UV Series 50, VisualCal, the VUTEK logo and WebTools are trademarks of Electronics for Imaging, Inc. in the U.S. and/or certain other countries. Best, the Best logo, Colorproof, PhotoXposure, Remoteproof, and Screenproof are trademarks of Electronics for Imaging GmbH in the U.S. and/or certain other countries. All other terms and product names may be trademarks or registered trademarks of their respective owners, and are hereby acknowledged.