

EFI Pace Customization Toolkit

Get the most from your Pace Solution.

The Customization Toolkit is a suite of add-on modules for advanced Pace users. The modules in this suite enable our clients to customize the system to meet specific needs. This suite is comprised of the following distinct add-on modules that you can license to achieve your specific customization needs.

User Defined Fields / Lists Module

The User Defined Field/Lists module allows the administrator to add fields and lists to most objects in the Pace management system. This module allows for the addition of various field types including String (Alphanumeric field), Memo, Integer (number), Date, Boolean (Yes / No), email address and URL. You can add these fields and use them on reports, on a screen and in Pacesation to record or track information related to an item that is not standard in Pace. These fields will not be affected by upgrades or other development enhancements over time.

This suite enables our clients to customize the system to meet specific needs.

User Defined Translations Module

The User Defined Translations module allows the administrator to modify the labels displayed for most of the fields throughout the system via a user interface directly in the Pace application.

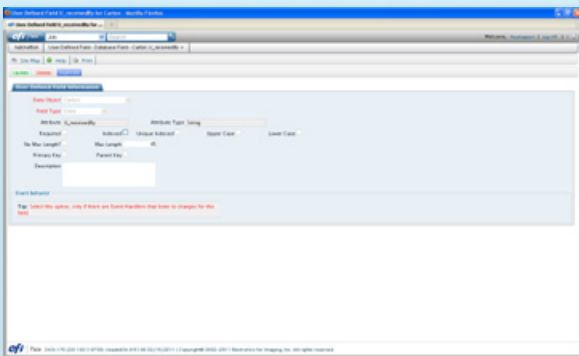
User Defined Defaults Module

The User Defined Defaults module allows the administrator to configure the default values associated with most of the fields for an object that you create or duplicate in the system and to control what the system carries forward when you duplicate something.

Pace Application Programming Interface (API) Module

The Pace API module offers you dynamic interaction with the Pace system while maintaining critical business rules of the application for data integrity. This module comes with an SDK and allows the administrator or programmer to interact directly with the Pace business tier to allow an external program or other application to integrate directly with Pace in a real-time mode. It is commonly used to integrate an existing web site to enter orders directly into Pace or to retrieve any information from within the management system and use that information for external purposes. This is an advanced module and one used by customers with an advanced level of programming aptitude. It offers access to the Pace business tier via a web services model and requires someone on staff with programming experience and common knowledge of advanced programming concepts such as XML, Java and SOAP.

The Pace API module offers you dynamic interaction with the Pace system while maintaining critical business rules of the application for data integrity.



The Add a User Defined Field Screen

EFI Pace Customization Toolkit

Email Notifications Module

The Email Notifications module allows the administrator to add notifications to the system that generate an email when certain events occur within the system and to change the behavior of a notification that is currently programmed into the system.



For more information contact EFI at 1-800-875-7117 or visit www.efi.com/pace

EFI's portfolio of integrated solutions increases productivity and improves your bottom line. Find out more at www.efi.com.

User Defined Forms/Contexts Module

The User Defined Forms and Contexts module allows the administrator to customize many of the forms (screen display), lists, or context menus.

Scheduled Tasks

The Scheduled Task feature allows the user to schedule tasks such as running a report or report package, generating an email, as well as system functions such as running Customer and Vendor aging reports

RSS Feeds

The RSS Feeds feature allows the administrator to publish key events, milestones and more as defined by the customer.



303 Velocity Way
Foster City, CA 94404
650-357-3500
www.efi.com

Auto-Count, BioVu, BioWare, ColorWise, Command WorkStation, Digital StoreFront, DocBuilder, DocBuilder Pro, DocStream, EDOX, the EFI logo, Electronics For Imaging, Fabrivu, Fiery, the Fiery logo, Inkware, Jetrion, MicroPress, OneFlow, PressVu, Printellect, PrinterSite, PrintFlow, PrintMe, PrintSmith Site, Prograph, RIP-While-Print, UltraVu and VUTEK are registered trademarks of Electronics for Imaging, Inc. in the U.S. and/or certain other countries. BESTColor is a registered trademark of Electronics for Imaging GmbH in the U.S. The APPS logo, AutoCal, Balance, ColorPASS, Dynamic Wedge, EFI, Estimate, Fast-4, Fiery Driven, the Fiery Driven logo, Fiery Link, Fiery Prints, the Fiery Prints logo, Fiery Spark, FreeForm, Hagen, the Jetrion logo, Logic, Pace, Printcafe, the PrintMe logo, PrintSmith, Print to Win, PSI, PSI Flexo, Rastek, the Rastek logo, RIPChips, SendMe, Splash, Spot-On, UltraPress, UltraTex, UV Series 50, VisualCal, the VUTEK logo and WebTools are trademarks of Electronics for Imaging, Inc. in the U.S. and/or certain other countries. Best, the Best logo, Colorproof, PhotoXposure, Remoteproof, and Screenproof are trademarks of Electronics for Imaging GmbH in the U.S. and/or certain other countries. All other terms and product names may be trademarks or registered trademarks of their respective owners, and are hereby acknowledged