

EFI PrintSmith and xpedx

EFI Integration to xpedx Online Ordering and Pricing System Streamlines Workflow Process

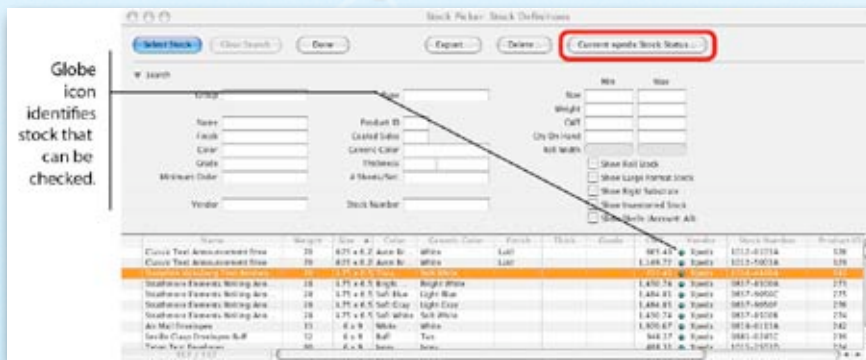
The new integration from EFI™ PrintSmith to xpedx e-commerce allows users to save time and money by being able to get current pricing and inventory levels straight from PrintSmith™ – without re-entering data. Once the stock is ready to be ordered, the process can be handled from PrintSmith as well, giving customers that extra time to focus on business development. PrintSmith users benefit from this automated interaction, and are able to provide fast and accurate pricing – every time.

What Have We Done?

- Leverage existing paper product catalog downloads into PrintSmith.
- Real time Stock Check Web Service.
- Customer Specific Pricing and current inventory availability.
- Electronic Order Send to xpedx.
- Batch pricing updates to your PrintSmith product file, for xpedx items.

What's It Mean for You?

- Real time product and pricing information directly from xpedx from within the PrintSmith application.
- Place orders directly from PrintSmith.

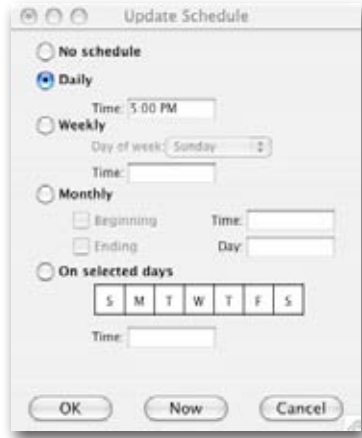


- No need to call your representative or customer service for availability information



EFI PrintSmith and xpedx

- Quick, easy maintenance of your product file and timely pricing updates handled automatically.



How do I sign up?

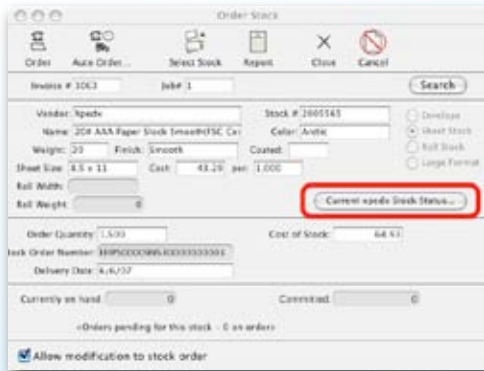
- Instructions from PrintSmith 8.1.12 xpedx Integration Release Notes.psf
- Send an email containing the following to: printsmith@xpedx.com.
- PrintSmith serial number.
- Static (external) IP address.
- Contact name and email address.
- Company name, address, and phone number.
- Allow a couple of days to complete setup.
- You will receive an email from xpedx when completed.

For more information on EFI PrintSmith call 800-426-4963 or visit www.efi.com/printsmith

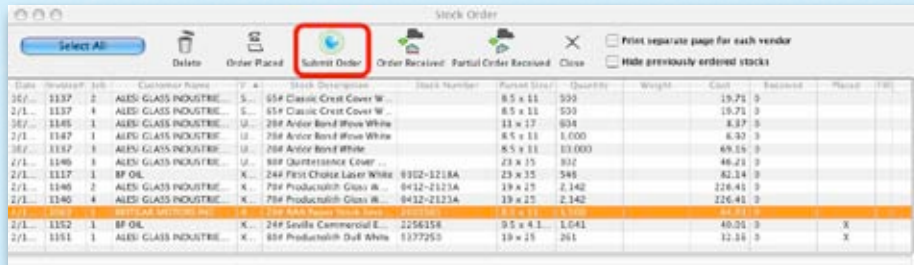


EFI's portfolio of integrated solutions increases productivity and improves your bottom line. Find out more at www.efi.com.

- Alleviates an often over looked issue, due to the time consuming nature of manually updating that information in the database.



- Order Send feature goes directly into the xpedx system and allocates available inventory.
- No delays at the fax machine or in customer service.
- Email order confirmation sent to acknowledge receipt of order and placement in our systems.



303 Velocity Way
Foster City, CA 94404
650-357-3500
www.efi.com

Auto-Count, BioVu, BioWare, ColorWise, Command WorkStation, Digital StoreFront, DocBuilder, DocBuilder Pro, DocStream, EDOX, the EFI logo, Electronics For Imaging, Fabrivu, Fiery, the Fiery logo, Inkwave, JetTrion, MicroPress, OneFlow, PressVu, PrintIntellect, PrinterSite, PrintFlow, PrintMe, PrintSmith Site, Prograph, RIP-While-Print, UltraVu and VUTEK are registered trademarks of Electronics for Imaging, Inc. in the U.S. and/or certain other countries. BESTColor is a registered trademark of Electronics for Imaging GmbH in the U.S. The APPS logo, AutoCal, Balance, ColorPASS, Dynamic Wedge, EFI, Estimate, Fast-4, Fiery Driven, the Fiery Driven logo, Fiery Link, Fiery Prints, the Fiery Prints logo, Fiery Spark, FreeForm, Hagen, the JetTrion logo, Logic, Pace, Printcafe, the PrintMe logo, PrintSmith, Print to Win, PSI, PSI Flexo, Rastek, the Rastek logo, RIPChips, SendMe, Splash, Spot-On, UltraPress, UltraTex, UV Series 50, VisualCal, the VUTEK logo and WebTools are trademarks of Electronics for Imaging, Inc. in the U.S. and/or certain other countries. Best, the Best logo, Colorproof, PhotoXposure, Remoteproof, and Screenproof are trademarks of Electronics for Imaging GmbH in the U.S. and/or certain other countries. All other terms and product names may be trademarks or registered trademarks of their respective owners, and are hereby acknowledged