



EFI Radius Business Intelligence

Make Effective Decisions Quickly Based on Accurate Business Intelligence

Getting quick access to meaningful information from your company's data is essential to your business success. EFI™ Radius Business Intelligence gives you this capability with a comprehensive, customisable solution that takes your transactional data and turns it into powerful business intelligence for making effective decisions. It lets you instantly know how information is used, analysed and applied across your entire company to achieve greater efficiency, improve profit margins and deliver superior customer service.

Manage your Business More Effectively

This easy and interactive solution allows you to perform sophisticated performance analysis and reporting, so you get up-to-the-minute views of your business. Built on a flexible framework, it uses data throughout your organisation, including your EFI Radius ERP System, third-party financial software and spreadsheets, then consolidates this information for a comprehensive analysis of your organisation's performance.

Best yet, the affordable, easy-to-install solution can be deployed in days across your entire business to get the greatest return on investment fast and to deliver actionable information to the right people, when and where they need it.

Identify and Improve Key Areas of your Business Performance

EFI Radius Business Intelligence helps your company use key performance indicators to evaluate your business performance against metrics, such as profitability by customer and by plant. This intuitive, point-and-click application enables real-time, interactive analysis and manipulation of information.

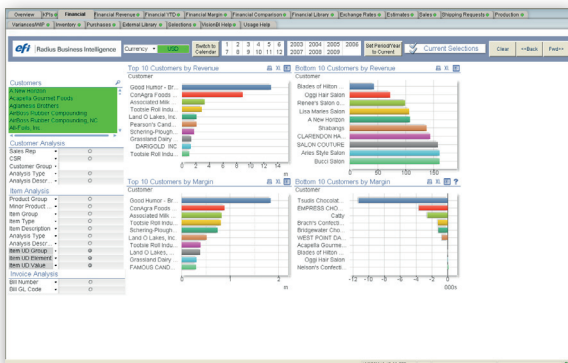
The solution also offers dashboards, alerts and multi-dimensional data analysis with slice-and-dice capabilities, so users can quickly drill down to core data held directly in memory. Now, you can locate your best customers and sales

representatives, know your cost and profit margins and empower your staff proactively to identify and solve problems.

Get the Information You Need On-Demand and Easily

The intuitive solution gives you an integrated view of your business with:

- A performance dashboard that provides a fast, graphical snapshot of your business health that is easy to understand. In minutes, you can see data by product, customer, downtime percentage, running speed, make-ready and waste percentage.
- What-if analysis that enables you to adjust specific metrics at a glance, including changes in price, board, ink, waste, speed and make-ready time. It also allows you to compare and contrast the effects that any changes have on your company's bottom line. Results can be analysed by month, week, day or even shift.
- An enquiry tool for fast, easy drill down of information to measure specific areas of your business such as:
 - **Profitability:** Now, you can measure your most profitable and least profitable customers by total volume versus margin, by plant, by sales representative, by quarter and by production.
 - **Production:** It allows you to track on-time delivery by customer, product, process and by carrier.
 - **Financial:** The solution gives you in-depth information on sales versus budget performance by quarter, month and year. It also gives you valuable insight into time to invoice and cash collection performance.
 - **Flexible Reporting:** It enables flexible reporting and publishing of data online for immediate access via the Web by approved users. The solution allows you to create and generate reports for compliance issues, corporate planning measures and even export data to Microsoft® Excel® worksheet.





EFI Radius Business Intelligence

EFI's portfolio of integrated solutions increases productivity and improves your bottom line. Find out more at www.efi.com.

Beat your Competition Today by Becoming More Productive, Profitable and Efficient

Don't miss another opportunity to differentiate your business from the competition by doing better work, making and saving more money and by increasing your customer satisfaction. With EFI Radius Business Intelligence, you:

- **Improve your productivity** by reducing the time spent hunting for information. It eliminates the need to reconcile numbers and build spreadsheets, allowing more time for tasks that bring greater value to your organisation. Meetings become more strategic, and your company becomes much more productive.
- **Get immediate access to company data**, so you can instantly find the information that you need from a selection of dashboards, analyses and reporting in a single solution and on a single architecture.

- **Increase your revenue** by monitoring and analysing costs down to transactional levels for indentifying new revenue opportunities. It also performs what-if analysis to see the potential impact of changing variables on your bottom line.
- **Gain valuable customer insight** by having more access to information across the enterprise to identify and understand your customers' needs and preferences.
- **Empower your entire organisation** with an intuitive, user-friendly application that requires little training. Information can even be customised for the individual's role in the organisation and is easily accessible via the Web.
- **Get a fast return on investment** through tight integration with your IT infrastructure, EFI Radius ERP system and third-party financial systems and spreadsheets. EFI Radius BI allows you to get more from your solutions, benefit from a shorter implementation time and recoup your costs quickly.

For more information about EFI Radius Business Intelligence, please visit www.efi.com/radius or call +44 (0)1246 298000.

Print to Win™ with EFI.

EFI™ (www.efi.com) is a world leader in customer-facing digital print products from job submission to production. Our integrated, end-to-end solutions include Fiery® digital print controllers and solutions; VUTEK® superwide digital inkjet solutions; Rastek™ wide-format solutions; Jetrion® industrial inkjet systems; print production workflow and management information software, and corporate printing solutions.

Advanced Professional Print Software