



EFI Fiery Central v1.5.3 Release Notes

Date Issued: Tue 2/24/2009
Fiery Central Version: 1.5.3

This document contains information about your Fiery Central software update. Before installing Fiery Central software version 1.5.3, make a copy of these *Release Notes* and distribute them to all users.

New Features of Fiery Central v1.5.3

- Support for Generic PostScript Printers. Generic PostScript printer support includes support for color and black and white PostScript 3 & 2 devices and allows a user to set number of copies, page size, duplexing and collating.
- Software fixes
- Support has been added for the following engines:

Fiery Central Version	OEM	Printer	OEM Controller	Controller Version
1.5.3	Canon	imagePRESS 1135, 1125, 1100	J100	1.0
1.5.3	Canon	imagePRESS 1135, 1125, 1100	J100	1.0
1.5.3	Ricoh	Aficio MP C6000 / C7500	E-8100 (outside US)	1.0
1.5.3	Ricoh	Ricoh Pro C550EX	Pro 80 (US bundled with engine)	1.0
1.5.3	Ricoh	Aficio MP C4000 / C5000	E-5100	1.0
1.5.3	Ricoh	Aficio MP C2800 / C3300	E-3100	1.0
1.5.3	Ricoh	Ricoh Pro C900 / C900S	Pro C900 Fiery	2.0/30

Updating Procedures

When you update the Fiery Central software from an earlier software version, please use one of the following procedures. Note the update is only supported from Fiery Central v1.5.2.

TO UPDATE FROM FIERY CENTRAL VERSION 1.5.2 TO VERSION 1.5.3 using System Update

If System Update is enabled, the 1.5.3 update will automatically be downloaded and, depending on settings, may be automatically installed. If it is not enabled, you can use the following procedure to install the update.

1. Launch System Updates from Start, Programs, Fiery.
2. Click the "Check Now" button to check for available updates.
3. If the update appears in the list, select it and click "Install".

TO UPDATE FROM FIERY CENTRAL VERSION 1.5.2 TO VERSION 1.5.3 via download.

NOTE: The update software is a .zip file which can be downloaded from the Downloads and Demos section of <http://www.efi.com/products/production/fierycentral/support/>. You must extract and save the contents to a location on your desktop before you can install the software update.

1. Double Click on 'FieryCentral_Update153.zip'
2. Download and save the file.
3. Unzip the FieryCentral_Update153.zip.
4. Double Click on the FieryCentral_Update153.exe file to install

**Generic
PostScript
Printer Feature:**

Fiery Central version 1.5.3 offers support for Generic PostScript printers to be added in the Printer Groups of the Fiery Central Manager.

Adding PostScript printers to a Printer Group

A printer group is defined by the printers that belong to the group, and the default print option settings associated with the group.

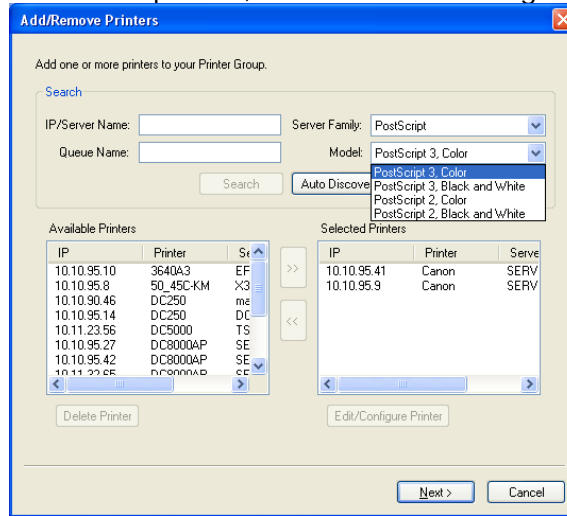
Note1: Keep in mind the capabilities of your printers, the types of printing you will be doing, and if speed or custom printing is a priority when you create printer groups.

Note2: Adding a Generic PostScript driver will use up a license from your available engine licenses.

To add and remove printers for a printer group:

1. In the Fiery Central Manager dialog window, select the Printer Groups tab.
2. Click Add to add a new group, or select a group in the list and click Edit.
3. Enter the Group Name and Description and click Next.
4. From the "Server Family" pull-down menu, select PostScript.
5. From the Model pull-down menu, select PostScript option.
6. Enter the IP address or printer name in the IP/Server Name field, and click Search.
7. Found printers appear in the Available Printers list.
8. Select a printer in the Available Printers list and click the arrow button (>>) to move it to the Selected Printers list.

9. Select the printer, and click Edit/Configure.



10. When you move a printer into the Selected Printers list, the Edit/Configure Printer dialog box for that printer opens automatically.
11. Configuring a printer for a group, move any other printers you want for the group one by one to the Selected Printers list, and configure them.
12. Click Next.
13. You can now set Group Options for the Printer Group.