

# Fiery Color Profiler Suite

Fiery® Color Profiler Suite is the market-leading color management solution for Fiery controllers consisting of integrated tools that give you total color quality control at every stage of the printing workflow. The comprehensive suite extends the color capability of Fiery-driven® printers, ensuring that your color reproduction is always accurate, consistent, and reliable. The table below highlights the solution's features and functionality.

## Profile Making



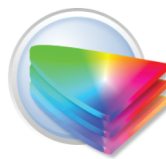
### Printer Profiler

- Create CMYK and RGB profiles,
- Support for ICC v2 and ICC v4 profiles
- Choice of patch layout (IT8.7/3, IT874, ECI)
- Generate patch pages in PDF
- Choice of bitmap or vector target formats
- Visual feedback during measurements
- Individual target ID numbering
- Bi-directional measurements
- Re-measure strips of individual patches
- Combine measurements to produce an averaged profile
- Optimized toner/ink coverage
- Enhanced Saturation Intent Mapping
- Enhanced Perceptual Intent Mapping
- Advanced Black Controls
- Auto Population of Fiery Printer Presets
- Optimize Calibration for Fiery Printers
- Auto install profile on Fiery Printers
- Calibration and measurement check



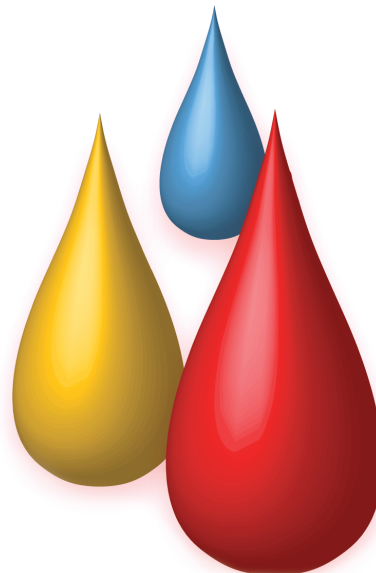
### Monitor Profiler

- Create LCD, CRT, laptop profiles
- Easy and advanced mode
- Gray balance optimization
- User definable luminance settings
- Profile summary report
- Works with MAC OS X10.7 and latest Windows versions



### Device Linker

- Match output between two printers
- Match output to an industry standard
- Match proofing and production output
- Combine source and destination profiles
- Insert up to two intermediate profiles
- User defined separation options
- Preserve clean CMY primaries
- Black channel preservation
- Black point compensation
- Gray preservation
- Iterative match to a standard with iO automation
- Pick best iteration for device link creation
- Update existing device link to re-tune color



## Profile Editing and Inspection



### Profile Inspector

- 3D gamut viewer
- View CMYK and RGB profiles
- View spot color profiles
- Compare two profiles
- Plot gamut as points or surface
- Out-of-gamut checking for spot colors



### Profile Editor

- Edit CMYK and RGB profiles
- Soft proof color edits
- Edit to reference or custom image
- View before and after comparisons
- Edit multiple rendering intents
- Apply single or multiple edits
- Edit in CMYK, RGB, XYZ or Lab
- Sample point selection
- Measure source color for comparison
- Global and selective color editing
- Hue, lightness, contrast, saturation editing
- Node editing
- Media whitepoint editing

## Quality Assurance

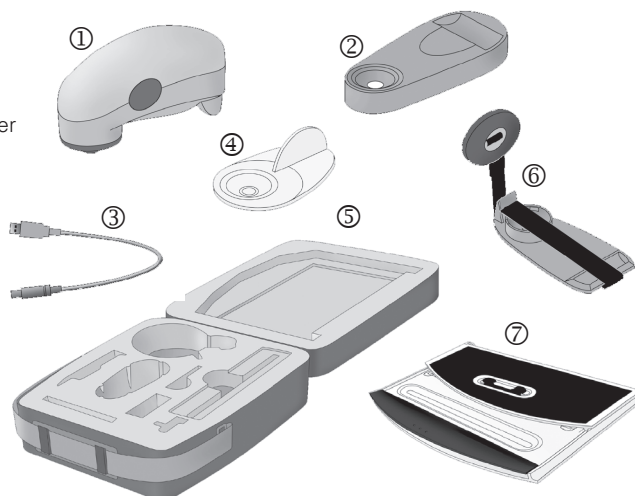


### Color Verifier

- Measurement-based verification tool to check
  - proofs in accordance with industry standards defined in ISO 12647-7 / 8 for contract proofing and validation printing and G7
  - color consistency of proofs, prints and profiles
- Measurement-based comparison of either profile-to-proof, proof-to-proof, proof-to-print, print-to-print, profile-to-print or profile-to-profile
- 2D and 3D visualization of color gamuts
- ISO characterization sets supplied including:
  - ISO 12647-2
  - ISO 12647-7
  - G7
- Support for industry-standard control strips:
  - Ugra/Fogra Media Wedge 2.2a
  - Ugra/Fogra Media Wedge 3.0a
  - IDEAlliance ISO 12647-7 2007 Control Strip
- Support of EFI™ Dynamic Wedge
- Custom-made presets definable for individual quality standards
- Support for industry standard and user defined tolerances
- Support for remote proofing
- Printable, extensive ISO compliant report for analysis purposes
- ISO compliant summary for daily proof production, printable on label (supporting DYMO LabelWriter Series 320, 330Turbo and 400 or laser printers via PDF export)

### Packaging Contents

1. ES-1000 Spectrophotometer
2. Calibration Plate
3. USB Cable
4. Positioning Target
5. Carrying Case
6. CRT Monitor Holder
7. Ruler with Backup Board



### System Requirements

Memory	512 MB of available RAM
Hard drive space	500 MB of available HDD
USB	1 port required
Min. monitor resolution	1024 x 768
OS support	Windows 2000, XP, 7, Vista 64 Mac 10.3.x Power PC Mac 10.6, 10.7 Mac Intel

### Hardware Support

- EFI ES-1000 spectrophotometer
- Eye-One spectrophotometer
- i1iO automated scanning table

### Licensing and Support

- Demo mode: Create, save, edit and inspect profiles
- Automated web based licensing
- License on multiple instances of Mac and PC
- Automatic updates via the web
- Contextual Online Help
- Free elearning courses

303 Velocity Way  
Foster City, CA 94404  
650-357-3500  
[www.efi.com](http://www.efi.com)

Auto-Count, BioVu, BioWare, ColorWise, Command WorkStation, Digital StoreFront, DocBuilder, DocBuilder Pro, DocStream, EDOX, the EFI logo, Electronics For Imaging, Fabrivu, Fiery, the Fiery logo, Inkware, Jetriion, MicroPress, OneFlow, PressVu, Printelect, PrinterSite, PrintFlow, PrintMe, PrintSmith Site, Prograph, RIP-While-Print, UltraVu and VUTEK are registered trademarks of Electronics for Imaging, Inc. in the U.S. and/or certain other countries. BESTColor is a registered trademark of Electronics for Imaging GmbH in the U.S. The APPS logo, AutoCal, Balance, ColorPASS, Dynamic Wedge, EFI, Estimate, Fast-4, Fiery Driven, the Fiery Driven logo, Fiery Link, Fiery Prints, the Fiery Prints logo, Fiery Spark, FreeForm, Hagen, the Jetriion logo, Logic, Pace, Printcafe, the PrintMe logo, PrintSmith, Print to Win, PSI, PSI Flexo, Rastek, the Rastek logo, RIPChips, SendMe, Splash, Spot-On, UltraPress, UltraTex, UV Series 50, VisualCal, the VUTEK logo and WebTools are trademarks of Electronics for Imaging, Inc. in the U.S. and/or certain other countries. Best, the Best logo, Colorproof, PhotoXposure, Remoteproof, and Screenproof are trademarks of Electronics for Imaging GmbH in the U.S. and/or certain other countries. All other terms and product names may be trademarks or registered trademarks of their respective owners, and are hereby acknowledged