

PRODUCTION PRINTING SOLUTIONS

Fiery Central Flow

Make Prepress Work Faster, Easier and More Cost Effective

Generating flawless print-ready output is a key challenge for small to mid-sized print shops and in-house corporate operations. Fiery® Central Flow eliminates this issue by delivering advanced prepress capabilities in an easy-to-use, cost effective solution. It customizes PDF-workflows through an intuitive graphical user interface, while integrating powerful tools such as Preflight, Send, Spot Manage and more. The comprehensive system also comes with Fiery ColorWise®, a world-class color management system.

Automate Workflow to Reduce Labor-Intensive Manual Tasks

Drag n' drop tools in the interface reduce labor-intensive manual tasks and provide consistency and reliability by incorporating the file conversion, preflight, spot color management, approval, routing and proofing processes into automated customizable workflows. These automated workflows can be edited and managed by operators of any skill level and saved as templates to save time, reduce errors and decrease rework. In addition, operators can further optimize resources and increase production by redirecting jobs, folders and files from one location to another with the Send feature.

Make PDF File conversion Effortless

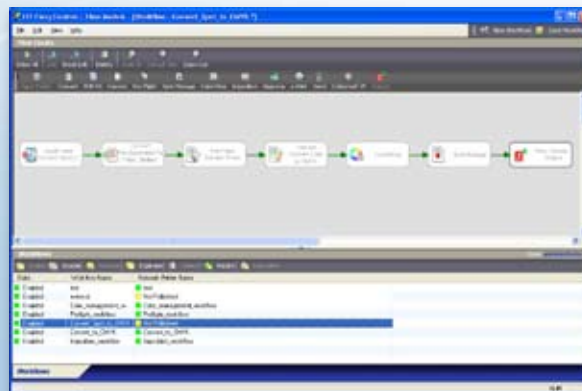
For easy file conversion, the solution comes with the Flow Convert feature, which accepts various file formats and automatically converts them into PDFs, decreasing the need for operator intervention and native file applications.

Decrease Errors Dramatically

Prepress errors cost precious money and time. With the Preflight module, missing fonts, low resolution images, and spot colors are automatically checked, using a PitStop preflight profile. This module dramatically reduces errors by making sure incoming files have the right parameters.

The Correct capability allows users to apply PitStop Actions to an incoming job. Actions added to a workflow can be used to automatically correct and edit PDF elements, add job objects such as crop marks, inspect PDF properties and compile file information.

Other features, such as the Approve feature, save time and rework by allowing operators to stop and check the content and layout before committing to a print run. E-Print also offers users the flexibility to proof or print a job at any stage throughout the workflow to any network or third party print device. To keep remote users on top of the job process, Flow comes with an e-mail capability that lets them know when a job passes a particular stage in the workflow. This feature also can include a PDF file from the Approve step, allowing content and layout proofing by e-mail, saving time. In addition, workflow cycles are saved, delivering faster turnaround and enabling less experienced employees to be more productive.



Fiery Central Flow's intuitive interface with drag n' drop capabilities reduce manual tasks and provide consistency and reliability.

Achieve Accurate Colors the First Time

Fiery ColorWise, a color management task module, gives the maximum control over color quality by applying ICC profiles to RGB, CMYK and grayscale elements for images, text and vector graphics. Spot Manage detects the presence of spot color in a job. This feature is able to convert spot color to CMYK or rename a spot color and redefines its CMYK equivalent at the same time.

Optimize Production Workflow

The Imposition tool streamlines production workflow by automating imposition. This module supports all imposition templates created in Fiery SeeQuence Impose, in addition to custom imposition creation.

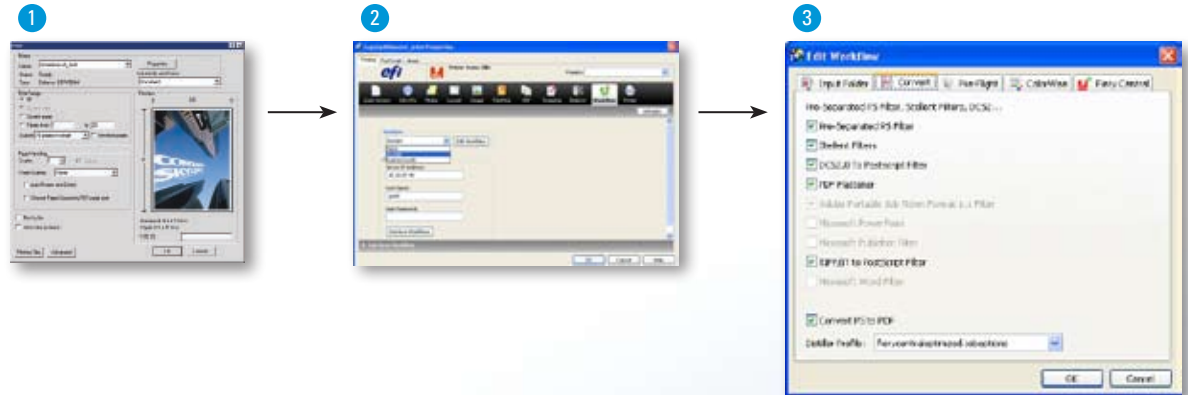
The Colorproof™ module enables users to output Fiery Central jobs to a Colorproof XF-driven device for proofing, large-format production or photographic printing.

The Image Enhance module automatically corrects embedded RGB and CMYK images in PDF files. It is ideal for photo applications or heavy production environment where users are required to correct images quickly.

PRODUCTION PRINTING SOLUTIONS

Fiery Central Flow

Fiery Central 1.8



Fiery Central Flow workflow editing capabilities are easily accessible through the Fiery Driver.



Input

Starts the workflow process.



Convert to PDF

Offers powerful conversions of multiple file types to PDF.



Preflight

Checks parameters of incoming files with Enfocus PitStop preflight profiles.



Output

Outputs jobs to Fiery Command Workstation.®



Approve

Holds job until approval is received.



Correct

Applies corrections or changes automatically from a PitStop script.



Send

Sends files to a designated folder or via FTP.



PDF-PS

Converts PDF back to Postscript.



e-Print

Sends jobs to any PS printer.



ColorWise

Color management task module that applies to ICC modules.



Spot Manage

Detects the presence of spot colors.



Image Enhance

Corrects embedded RGB and CMYK images in PDF files automatically.



Imposition

Provides automated job imposition.



Colorproof XF

Enables users to output jobs to a Colorproof XF driven device.

Beat the competition and profit with EFI's integrated Fiery, VUTEK®, APPS, Jetrion® and Rastek™ solutions.

Visit www.efi.com to find out more.



303 Velocity Way
Foster City, CA 94404
650-357-3500
www.efi.com

Auto-Count, BioVu, BioWare, ColorWise, Command WorkStation, Digital StoreFront, DocBuilder, DocBuilder Pro, DocStream, EDOX, the EFI logo, Electronics For Imaging, Fabrivu, Fiery, the Fiery logo, Inkware, Jetrion, MicroPress, OneFlow, PressVu, Printelect, PrinterSite, PrintFlow, PrintMe, PrintSmith Site, Prograph, RIP-While-Print, UltraVu and VUTEK are registered trademarks of Electronics for Imaging, Inc. in the U.S. and/or certain other countries. BESTColor is a registered trademark of Electronics for Imaging GmbH in the U.S. The APPS logo, AutoCal, Balance, ColorPASS, Dynamic Wedge, EFI, Estimate, Fast-4, Fiery Driven, the Fiery Driven logo, Fiery Link, Fiery Prints, the Fiery Prints logo, Fiery Spark, Free-Form, Hagen, the Jetrion logo, Logic, Pace, Printcafe, the PrintMe logo, PrintSmith, Print to Win, PSI, PSI Flexo, Rastek, the Rastek logo, RIPChips, SendMe, Splash, Spot-On, UltraPress, UltraTex, UV Series 50, VisualCal, the VUTEK logo and WebTools are trademarks of Electronics for Imaging, Inc. in the U.S. and/or certain other countries. Best, the Best logo, Colorproof, PhotoXposure, Remoteproof, and Screenproof are trademarks of Electronics for Imaging GmbH in the U.S. and/or certain other countries. All other terms and product names may be trademarks or registered trademarks of their respective owners, and are hereby acknowledged.
© 2011 Electronics for Imaging